

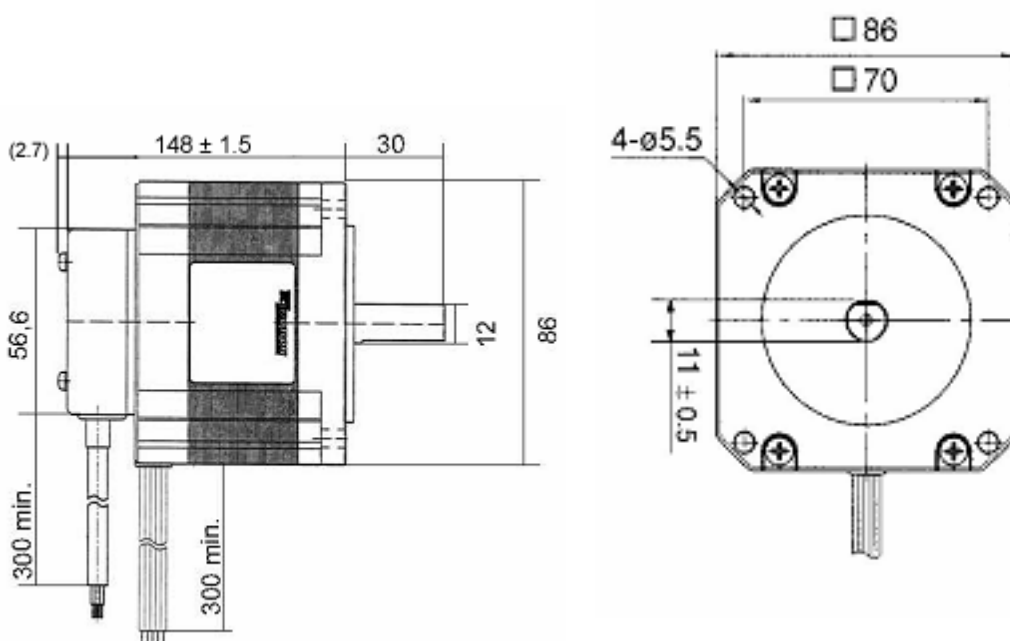


## SECM5913 Baureihe

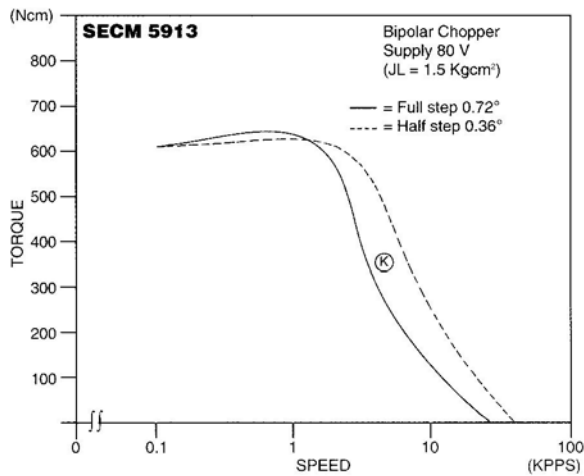
5-Phasen-Schrittmotor mit Encoder  
[0,72° High-Torque-Version]

Model	Bipolar				Speed Torque
	Holding Torque [Nm]	Current / Phase [A]	Resistance / Phase [Ohm]	Inductance / Phase [mH]	
P = Line Drive 500 Counts/Turn SECM5913-T2.8P2500	6.3	2.8	0.85	6.5	k

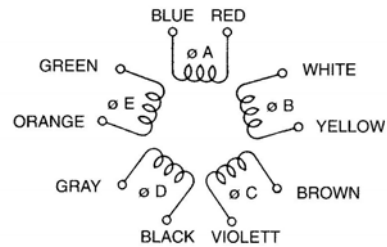
Number of Leads	Weight of Motor & Encoder	Size Length	Rotor Inertia
10	4.1 kg	150.7 mm	$3000 \times 10^{-7} \text{ kgm}^2$



Optional sind für unsere Schrittmotoren Planetengetriebe erhältlich.



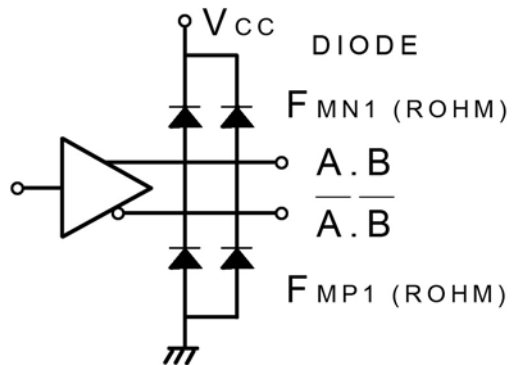
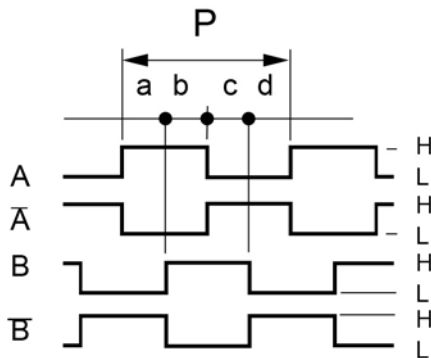
## Schrittmotoranschluss



## Encoder Performance

Operating Temp.range : 0°C – 85°C  
 Supply : DC 5V ± 5% , 100mA max  
 Resolution : 500 Counts / Turn  
 Frequency Response : 100K Hz max.  
 A phase difference : 1/4 P ± 1/8 P  
 Code : Incremental A.B (2Ch.)

Output Signal : when output is high : DC 2.4V min  
 Output Signal : when output is low : DC 0.4V max  
 Sinking & Output Current : typical ± 20mA max  
 Rise & Fall Times : 1 µsec max  
 Moment of inertia : 5 g·cm<sup>2</sup> max Encoder only  
 Output Circuit : Line Driver AM26C31IDB



CW Rotation viewed from mounting end. Encoder signal A and B position is "H" at Motor 4Phase on.

## Color of Leadwires and Funktion :

DC 5V = red      A phase = brown       $\bar{A}$  phase = orange  
 GND = blue      B phase = yellow       $\bar{B}$  phase = gray

(Old-Version)

A phase = brown       $\bar{A}$  phase = orange  
 B phase = yellow       $\bar{B}$  phase = white  
 DC 5V = red      GND = black