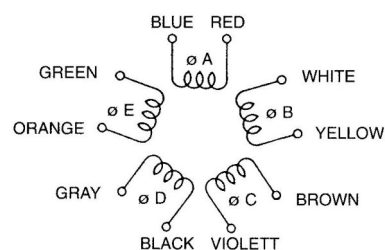
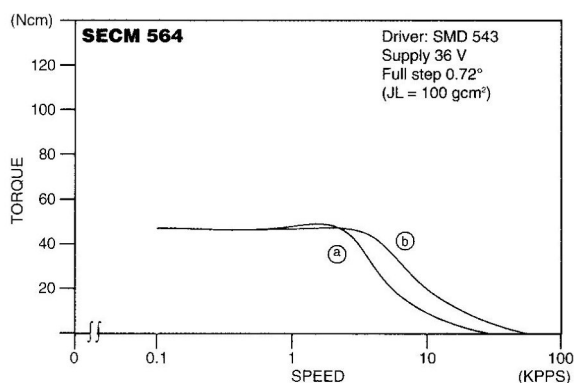
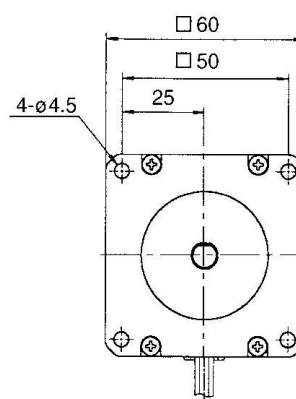
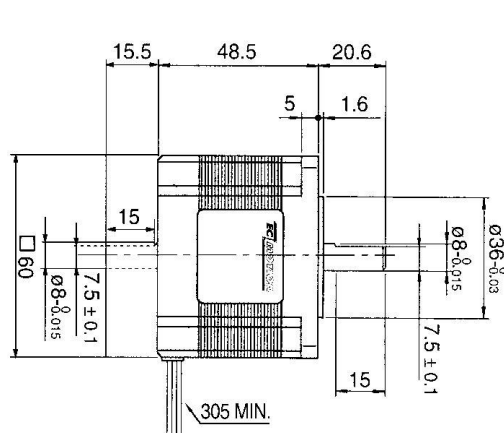


SECM564... Series

5-Phase-Stepping Motor [0,72° High-Torque-Version]

Model	Full Step Angle	Holding Torque (Ncm)	Current/ Phase (A)	Resistance/ Winding (Ω)	Inductance/ Winding (mH)	Voltage DC (V)	Torque/ Speed
A = Single B = Double Shaft							
SECM 564 - T 0.8 A SECM 564 - T 0.8 B	0.72°	42	0.75	2.6	6.0	2.0	Ⓐ
SECM 564 - T 1.4 A SECM 564 - T 1.4 B	0.72°	42	1.40	0.8	2.0	1.1	Ⓑ
Number of Leads	Weight (Kg)		Size Length (mm)			Rotor Inertia (gcm²)	
10	0.5		60x60x48.5			175	



As options, we deliver Encoder and / or Planetary Gears for our Stepping Motors.