

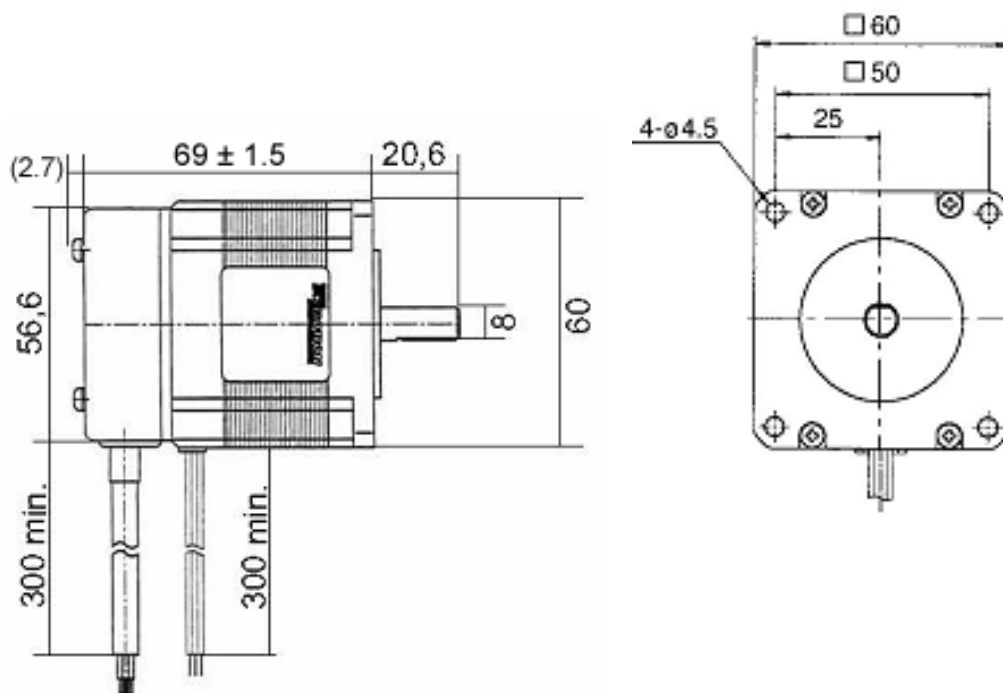


SECM564 Baureihe

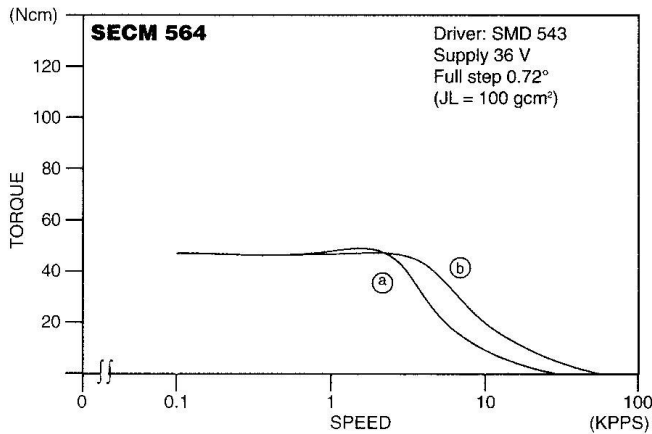
5-Phasen-Schrittmotor mit Encoder [0,72° High-Torque-Version]

| Model | Bipolar | | | | Speed Torque |
|--|---------------------|---------------------|--------------------------|-------------------------|--------------|
| | Holding Torque [Nm] | Current / Phase [A] | Resistance / Phase [Ohm] | Inductance / Phase [mH] | |
| P = Line Drive 500 Counts/Turn SECM564-T1.4P2500 | 0.42 | 1.4 | 0.8 | 2 | b |

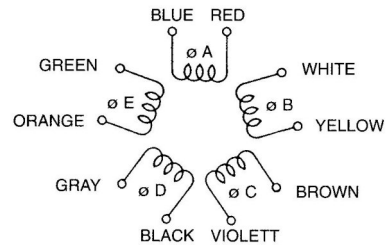
| | | | |
|-----------------|---------------------------|-------------|---|
| Number of Leads | Weight of Motor & Encoder | Size Length | Rotor Inertia |
| 10 | 0.7 kg | 71.7 mm | 175 x 10 ⁻⁷ kgm ² |



Optional sind für unsere Schrittmotoren Planetengetriebe erhältlich.



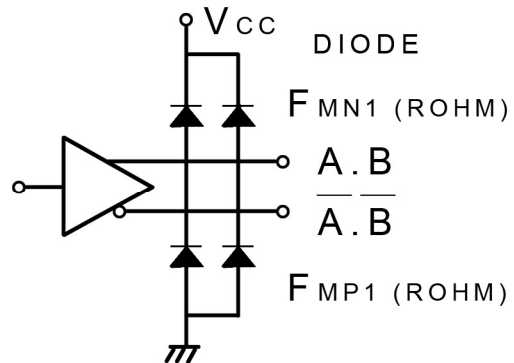
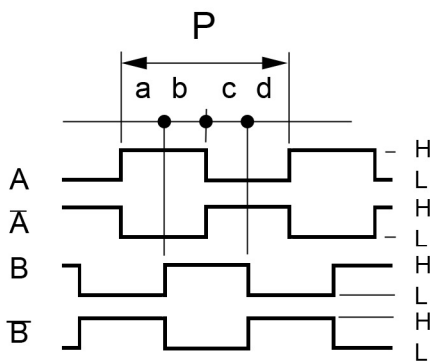
Schrittmotoranschluss



Encoder Performance

Operating Temp.range : 0°C – 85°C
 Supply : DC 5V ± 5% , 100mA max
 Resolution : 500 Counts / Turn
 Frequency Response : 100K Hz max.
 A phase difference : 1/4 P ± 1/8 P
 Code : Incremental A.B (2Ch.)

Output Signal : when output is high : DC 2.4V min
 Output Signal : when output is low : DC 0.4V max
 Sinking & Output Current : typical ± 20mA max
 Rise & Fall Times : 1 µsec max
 Moment of inertia : 5 g·cm² max Encoder only
 Output Circuit : Line Driver AM26C3IIDB



CW Rotation viewed from mounting end. Encoder signal A and B position is "H" at Motor 4Phase on.

Color of Leadwires and Funktion :

DC 5V = red A phase = brown A-bar phase = orange
 GND = blue B phase = yellow B-bar phase = gray

(Old-Version)

A phase = brown A-bar phase = orange
 B phase = yellow B-bar phase = white
 DC 5V = red GND = black