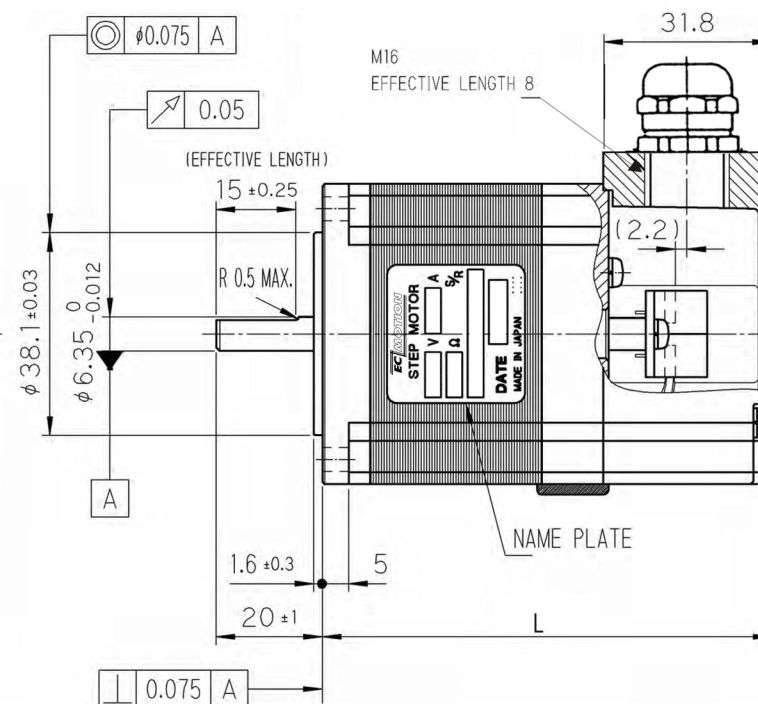
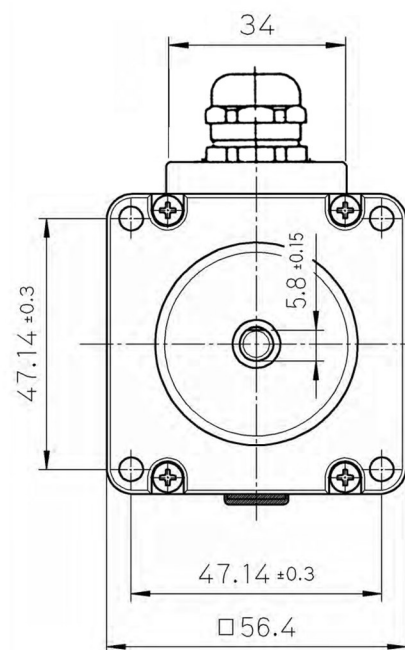
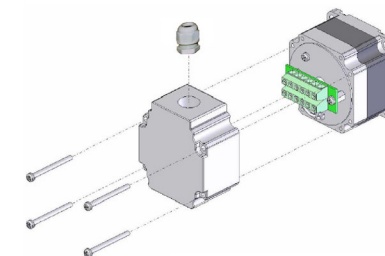


# Steppingmotor with Terminalbox:

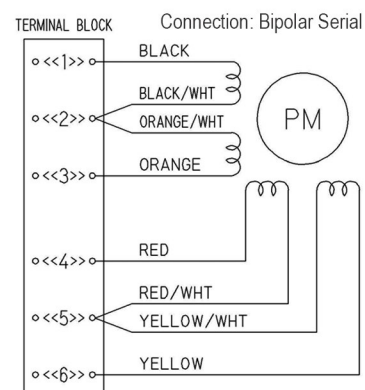
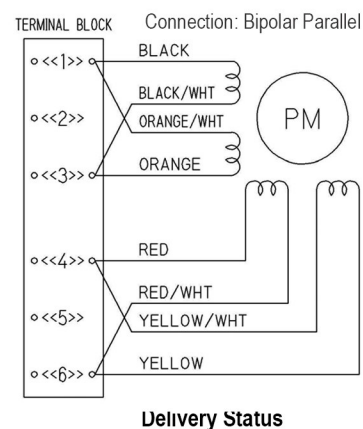


M3 SCREW  
FOR GND  
MALE SCREW  
6 MAX.  
TO INSIDE

ACCEPTABLE WIRES  
· AWG 26~16  
· STRIP LENGTH 6mm

TERMINAL BLOCK  
(PHOENIX CONTACT)  
MKDSN 1.5/6 × 2

MASKING  
(POTTING)



## 0.9° Full Step Angle:

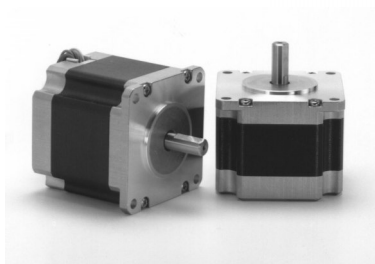
SECM264M-E2.0A-T	(Holding Torque = 0.55 Nm)	L = 69,5 mm
SECM264M-E3.0A-T	(Holding Torque = 0.55 Nm)	L = 69,5 mm
SECM266M-E2.0A-T	(Holding Torque = 1.25 Nm)	L = 84,5 mm
SECM266M-E3.0A-T	(Holding Torque = 1.25 Nm)	L = 84,5 mm
SECM268M-E2.0A-T	(Holding Torque = 1.95 Nm)	L = 106,5 mm
SECM268M-E2.4A-T	(Holding Torque = 1.95 Nm)	L = 106,5 mm
SECM268M-E3.0A-T	(Holding Torque = 1.95 Nm)	L = 106,5 mm



Glockensprung (neu) 8  
41812 Erkelenz  
Tel.: +49-2431-94206-0  
www.ec-motion.de - info@ec-motion.de

SECM264M / SECM266M / SECM268M

**2-Phase-Step Motor  
with Terminal Box**



## SECM266M... Series

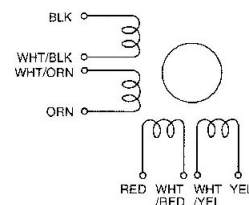
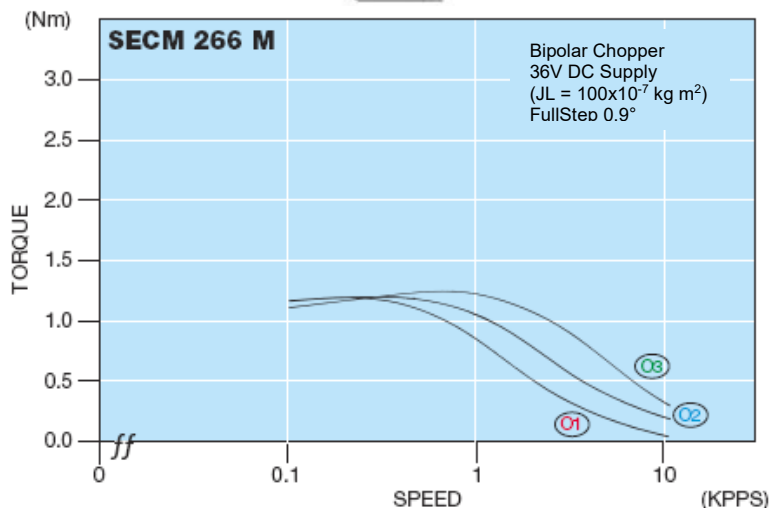
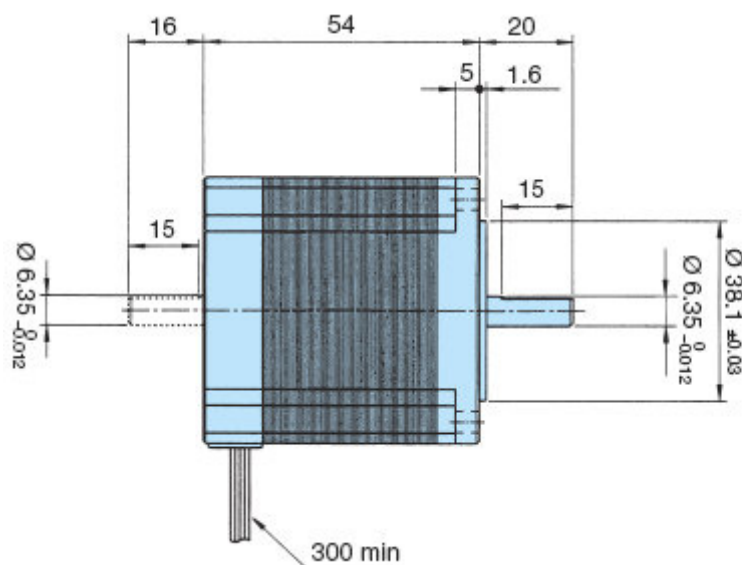
### 2-Phase-Stepping Motor

### [0,9° High-Torque-Version]

Model A = Single Shaft B = Double Shaft	● Bipolar Parallel				● Bipolar Serial				● Unipolar				Torque Speed- curve
	Holding Torque [Nm]	Current/ Phase [A]	Resistance/ Phase [Ohm]	Inductance/ Phase [mH]	Holding Torque [Nm]	Current/ Phase [A]	Resistance/ Phase [Ohm]	Inductance/ Phase [mH]	Holding Torque [Nm]	Current/ Phase [A]	Resistance/ Phase [Ohm]	Inductance/ Phase [mH]	
SECM266M-E1.0 (A/B)	1.25	1.4	3.6	23.1	1.25	0.7	14.4	92.4	0.95	1.0	7.2	23.1	01
SECM266M-E2.0 (A/B)	1.25	2.8	0.9	5.9	1.25	1.4	3.6	23.6	0.95	2.0	1.8	5.9	02
SECM266M-E3.0 (A/B)	1.25	4.2	0.4*	2.6	1.25	2.1	1.6*	10.4	0.95	3.0	0.8*	2.6	03

Number of Leads	Weight of Motor	Size Length	Rotor Inertia
8	0.7 kg	56.4 x 56.4 x 54 mm	310 x 10 <sup>-7</sup> kgm <sup>2</sup>

Resistance / Phase (Ω) = ± 10%, (\* ± 15%), Inductance / Phase (mH) = ± 20%



Planetary Gears are optionally available