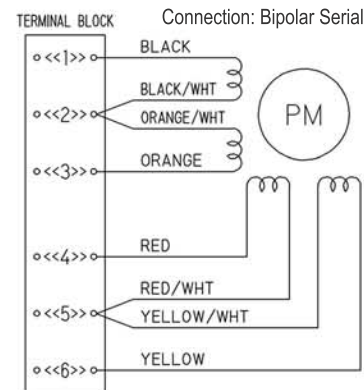
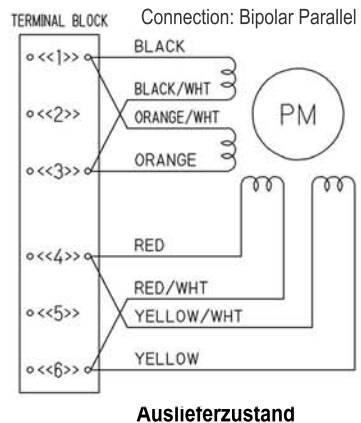
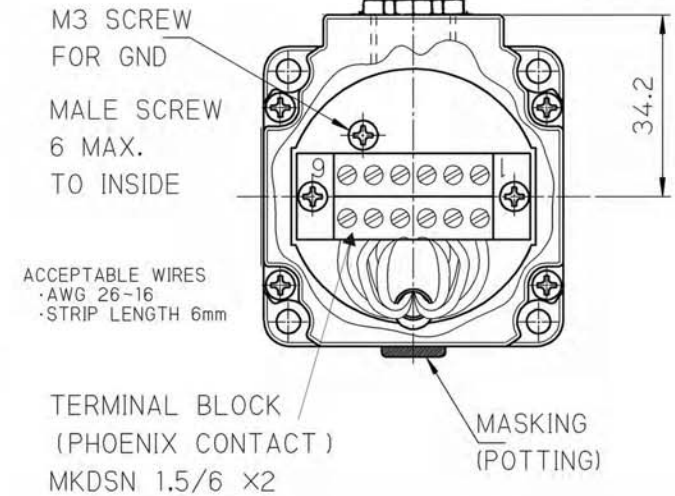
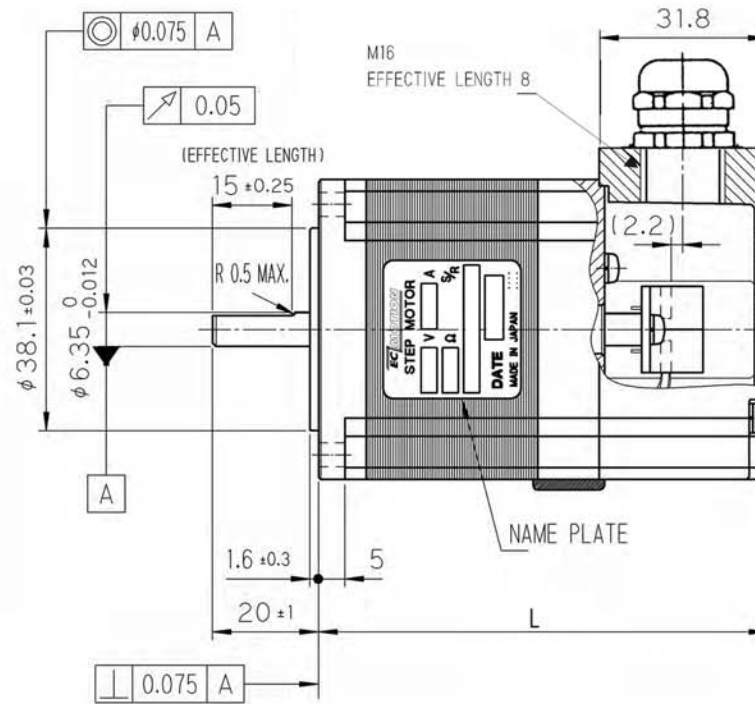
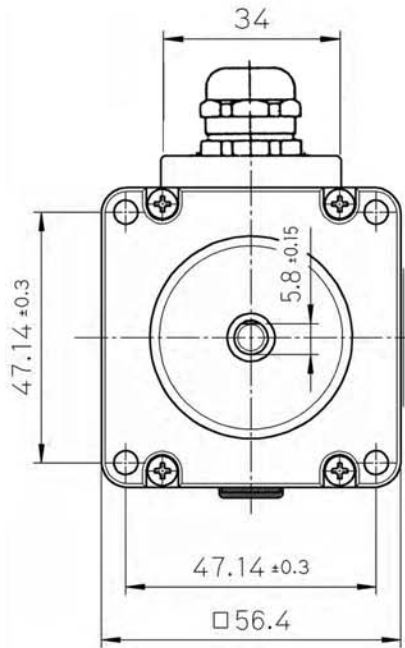
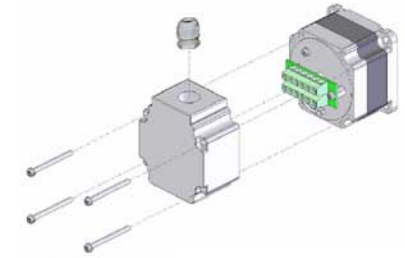


Schrittmotor mit Anschlußkasten:



0.9° Vollschrittwinkel:

SECM264M-E2.0A-T (Haltemoment = 0.55 Nm)	L = 69,5 mm
SECM264M-E3.0A-T (Haltemoment = 0.55 Nm)	L = 69,5 mm
SECM266M-E2.0A-T (Haltemoment = 1.25 Nm)	L = 84,5 mm
SECM266M-E3.0A-T (Haltemoment = 1.25 Nm)	L = 84,5 mm
SECM268M-E2.0A-T (Haltemoment = 1.95 Nm)	L = 106,5 mm
SECM268M-E2.4A-T (Haltemoment = 1.95 Nm)	L = 106,5 mm
SECM268M-E3.0A-T (Haltemoment = 1.95 Nm)	L = 106,5 mm



Auf den Steinen 20 - 41812 Erkelenz
Tel.: +49-2164-7014-0 - Fax: -701419
www.ec-motion.de - info@ec-motion.de

SECM264M / SECM266M / SECM268M

**2-Phasen-Schrittmotor
mit Anschlußkasten**

EC MOTION

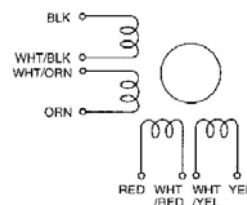
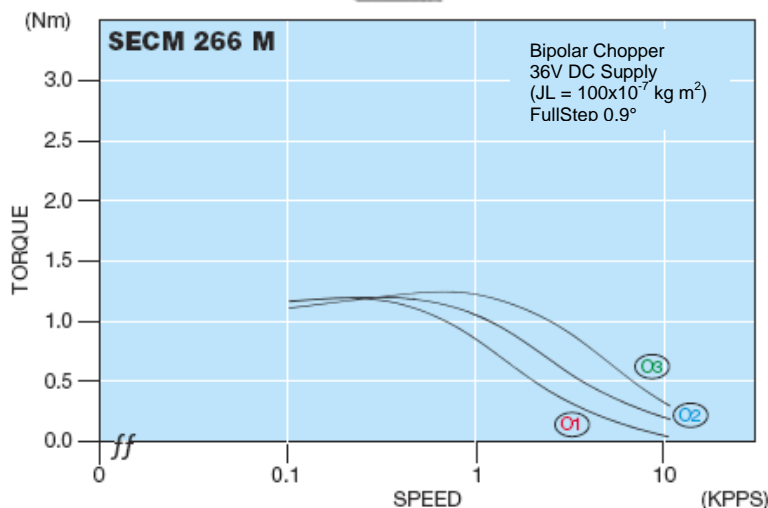
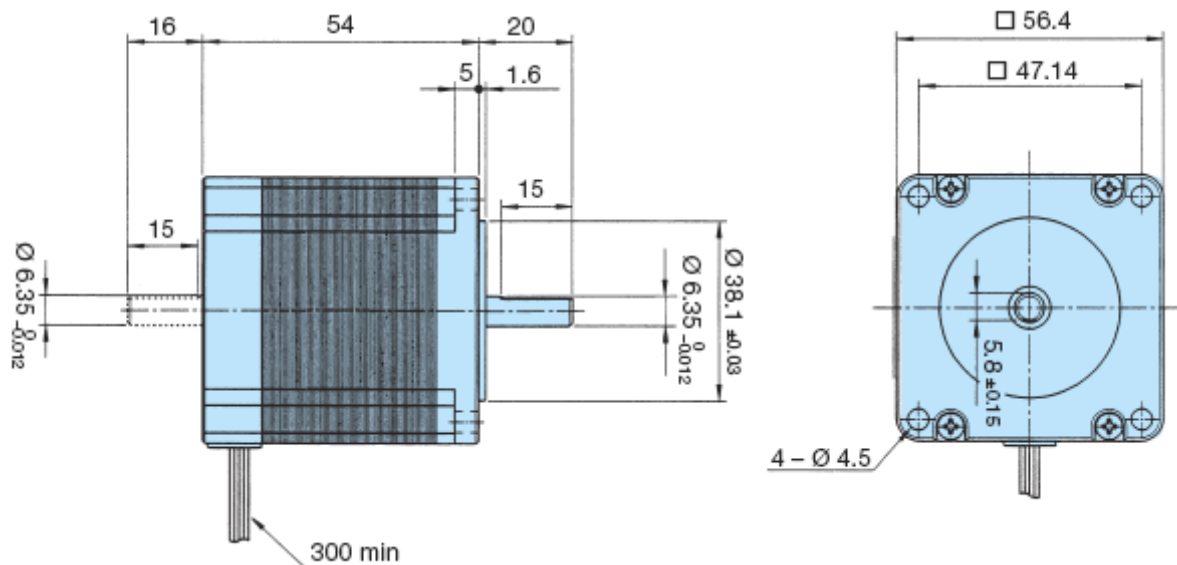


SECM266M... Serie 2-Phasen-Schrittmotor [0,9° High-Torque-Version]

Model A = Single Shaft B = Double Shaft	● Bipolar Parallel				● Bipolar Serial				● Unipolar				Torque Speed- curve
	Holding Torque	Current/ Phase	Resistance/ Phase	Inductance/ Phase	Holding Torque	Current/ Phase	Resistance/ Phase	Inductance/ Phase	Holding Torque	Current/ Phase	Resistance/ Phase	Inductance/ Phase	
	[Nm]	[A]	[Ohm]	[mH]	[Nm]	[A]	[Ohm]	[mH]	[Nm]	[A]	[Ohm]	[mH]	
SECM266M-E1.0 (A/B)	1.25	1.4	3.6	23.1	1.25	0.7	14.4	92.4	0.95	1.0	7.2	23.1	⓪1
SECM266M-E2.0 (A/B)	1.25	2.8	0.9	5.9	1.25	1.4	3.6	23.6	0.95	2.0	1.8	5.9	⓪2
SECM266M-E3.0 (A/B)	1.25	4.2	0.4*	2.6	1.25	2.1	1.6*	10.4	0.95	3.0	0.8*	2.6	⓪3

Number of Leads	Weight of Motor	Size Length	Rotor Inertia
8	0.7 kg	56.4 x 56.4 x 54 mm	310 x 10 ⁻⁷ kgm ²

Resistance / Phase (Ω) = ± 10%, (* ± 15%), Inductance / Phase (mH) = ± 20%



Planetengetriebe sind optional erhältlich



EC Motion GmbH - Auf den Steinen 20 - 41812 Erkelenz
Tel.: +49 (0)2164-7014-0 - Fax.: +49 (0)2164-701419
Internet: www.ec-motion.de - e-mail: info@ec-motion.de

