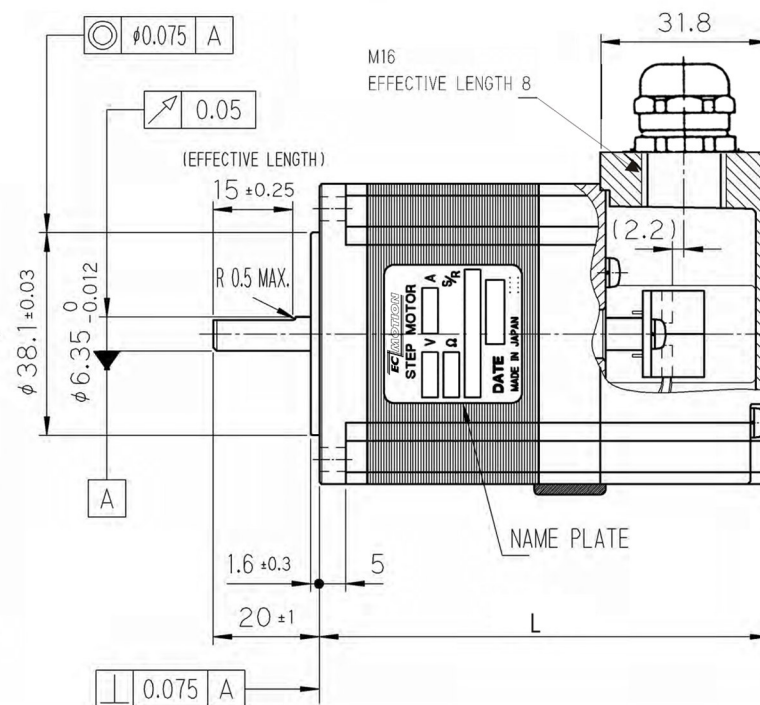
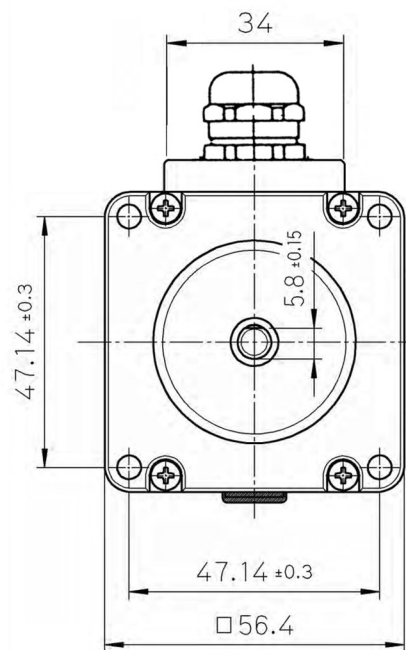
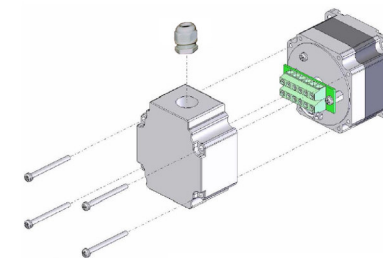


# Steppingmotor with Terminalbox:

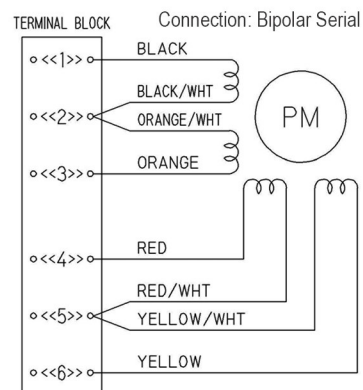
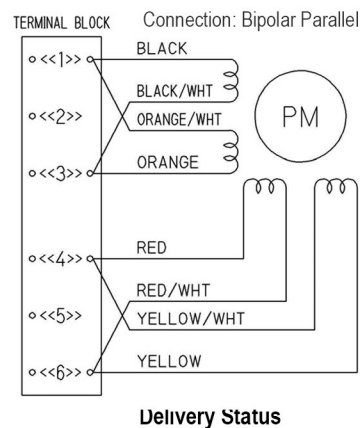


M3 SCREW  
FOR GND  
MALE SCREW  
6 MAX.  
TO INSIDE

ACCEPTABLE WIRES  
· AWG 26~16  
· STRIP LENGTH 6mm

TERMINAL BLOCK  
(PHOENIX CONTACT)  
MKDSN 1.5/6 x2

MASKING  
(POTTING)



## 0.9° Full Step Angle:

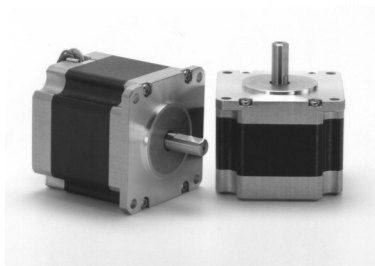
|                  |                            |              |
|------------------|----------------------------|--------------|
| SECM264M-E2.0A-T | (Holding Torque = 0.55 Nm) | L = 69,5 mm  |
| SECM264M-E3.0A-T | (Holding Torque = 0.55 Nm) | L = 69,5 mm  |
| SECM266M-E2.0A-T | (Holding Torque = 1.25 Nm) | L = 84,5 mm  |
| SECM266M-E3.0A-T | (Holding Torque = 1.25 Nm) | L = 84,5 mm  |
| SECM268M-E2.0A-T | (Holding Torque = 1.95 Nm) | L = 106,5 mm |
| SECM268M-E2.4A-T | (Holding Torque = 1.95 Nm) | L = 106,5 mm |
| SECM268M-E3.0A-T | (Holding Torque = 1.95 Nm) | L = 106,5 mm |



Glockensprung (neu) 8  
41812 Erkelenz  
Tel.: +49-2431-94206-0  
www.ec-motion.de - info@ec-motion.de

SECM264M / SECM266M / SECM268M

**2-Phase-Step Motor  
with Terminal Box**



## SECM264M... Series

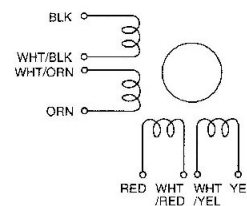
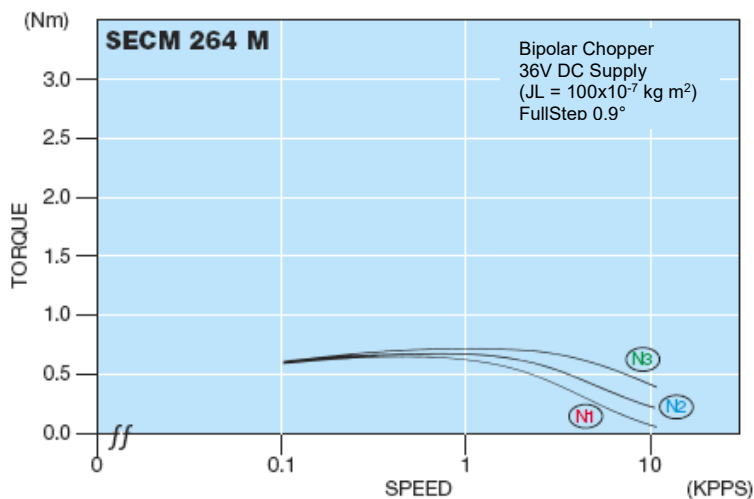
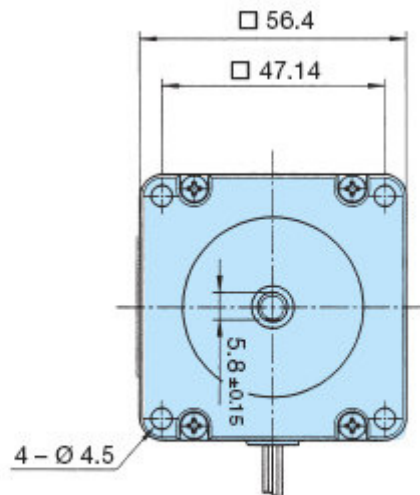
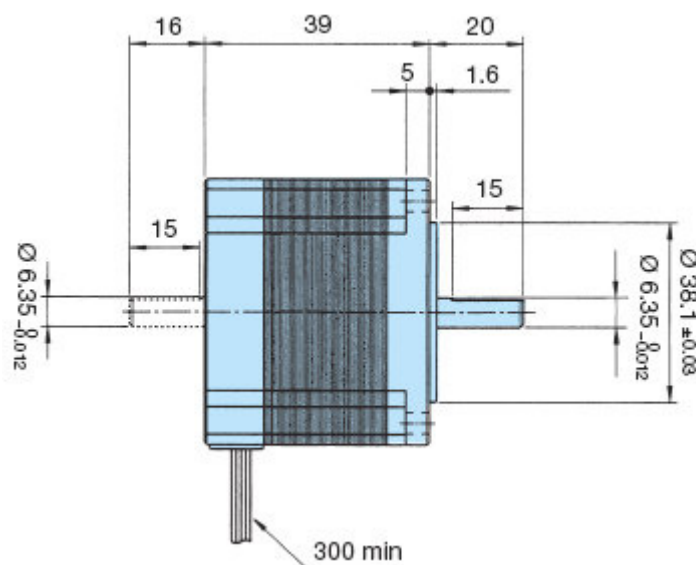
### 2-Phase-Stepping Motor

### [0,9° High-Torque-Version]

| Model<br>A = Single Shaft<br>B = Double Shaft | ● Bipolar Parallel        |                          |                               |                              | ● Bipolar Serial          |                          |                               |                              | ● Unipolar                |                          |                               |                              | Torque<br>Speed-<br>curve |
|---|---------------------------|--------------------------|-------------------------------|------------------------------|---------------------------|--------------------------|-------------------------------|------------------------------|---------------------------|--------------------------|-------------------------------|------------------------------|---------------------------|
|   | Holding<br>Torque<br>[Nm] | Current/<br>Phase<br>[A] | Resistance/<br>Phase<br>[Ohm] | Inductance/<br>Phase<br>[mH] | Holding<br>Torque<br>[Nm] | Current/<br>Phase<br>[A] | Resistance/<br>Phase<br>[Ohm] | Inductance/<br>Phase<br>[mH] | Holding<br>Torque<br>[Nm] | Current/<br>Phase<br>[A] | Resistance/<br>Phase<br>[Ohm] | Inductance/<br>Phase<br>[mH] |                           |
| SECM264M-E1.0 (A/B)                           | 0.55                      | 1.4                      | 2.8                           | 8.4                          | 0.55                      | 0.7                      | 11.2                          | 33.6                         | 0.44                      | 1.0                      | 5.6                           | 8.4                          | (N1)                      |
| SECM264M-E2.0 (A/B)                           | 0.55                      | 2.8                      | 0.7                           | 2.2                          | 0.55                      | 1.4                      | 2.8                           | 8.8                          | 0.44                      | 2.0                      | 1.4                           | 2.2                          | (N2)                      |
| SECM264M-E3.0 (A/B)                           | 0.55                      | 4.2                      | 0.3*                          | 0.9                          | 0.55                      | 2.1                      | 1.2*                          | 3.6                          | 0.44                      | 3.0                      | 0.6*                          | 0.9                          | (N3)                      |

| Number of Leads | Weight of Motor | Size Length         | Rotor Inertia                           |
|-----------------|-----------------|---------------------|---|
| 8               | 0.45 kg         | 56.4 x 56.4 x 39 mm | 145 x 10 <sup>-7</sup> kgm <sup>2</sup> |

Resistance / Phase (Ω) = ± 10%, (\* ± 15%), Inductance / Phase (mH) = ± 20%



Planetary Gears are optionally available