



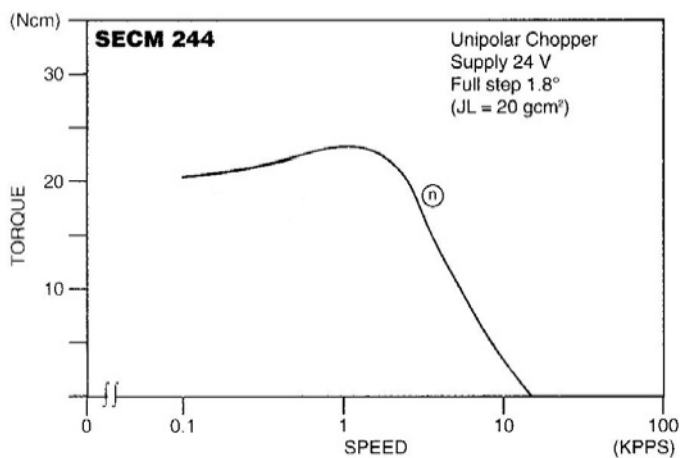
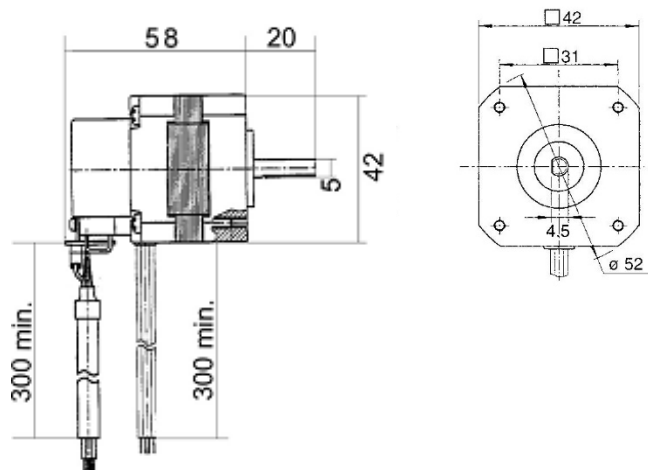
## SECM244er Baureihe

### 2-Phasen-Schrittmotor mit Encoder

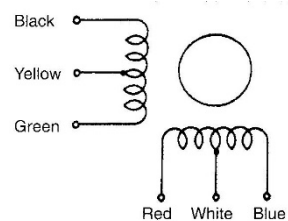
#### [1,8° High-Torque-Version]

| Model  | ● Bipolar (Series)  |                     |                          |                         | ● Unipolar          |                     |                          |                         | Speed Torque |
|--|---------------------|---------------------|--------------------------|-------------------------|---------------------|---------------------|--------------------------|-------------------------|--------------|
|  | Holding Torque [Nm] | Current / Phase [A] | Resistance / Phase [Ohm] | Inductance / Phase [mH] | Holding Torque [Nm] | Current / Phase [A] | Resistance / Phase [Ohm] | Inductance / Phase [mH] |              |
| SECM244-S1.2P2200<br>P = Line Driver<br>200 Pulse/Umd. | 0.33                | 0.85                | 6.6                      | 14.4                    | 0.26                | 1.2                 | 3.3                      | 3.6                     | n            |

| Number of Leads | Weight of Motor & Encoder | Size Length | Rotor Inertia                     |
|-----------------|---------------------------|-------------|-----------------------------------|
| 6               | 0.3 kg                    | 58 mm       | $54 \times 10^{-7} \text{ kgm}^2$ |



#### Schrittmotoranschluss



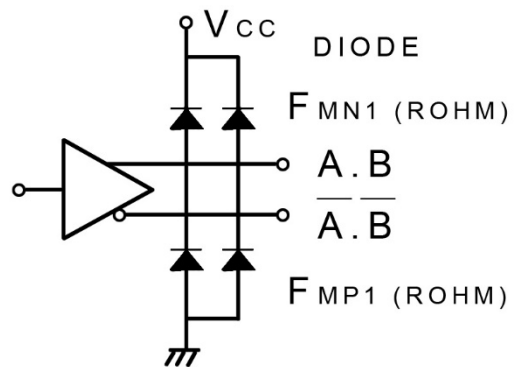
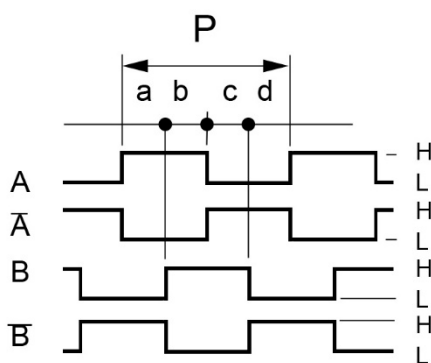
Optional sind für unsere Schrittmotoren auch Planetengetriebe erhältlich.



## Encoder Performance

Operating Temp.range : 0°C – 85°C  
 Supply : DC 5V ± 5% , 100mA max  
 Resolution : 200 Counts / Turn  
 Frequency Response : 100K Hz max.  
 A phase difference : 1/4 P ± 1/8 P  
 Code : Incremental A.B (2Ch.)

Output Signal : when output is high : DC 2.4V min  
 Output Signal : when output is low : DC 0.4V max  
 Sinking & Output Current : typical ± 20mA max  
 Rise & Fall Times : 1 µsec max  
 Moment of inertia : 5 g-cm<sup>2</sup> max Encoder only  
 Output Circuit : Line Driver AM26C3IIDB



CW Rotation viewed from mounting end. Encoder signal A and B position is “H” at Motor 2Phase on.

### Color of Leadwires and Funktion :

|             |                  |                          |
|-------------|------------------|--------------------------|
| DC 5V = red | A phase = brown  | $\bar{A}$ phase = orange |
| GND = blue  | B phase = yellow | $\bar{B}$ phase = gray   |

(Old-Version)

|                  |                          |
|------------------|--------------------------|
| A phase = brown  | $\bar{A}$ phase = orange |
| B phase = yellow | $\bar{B}$ phase = white  |
| DC 5V = red      | GND = black              |