



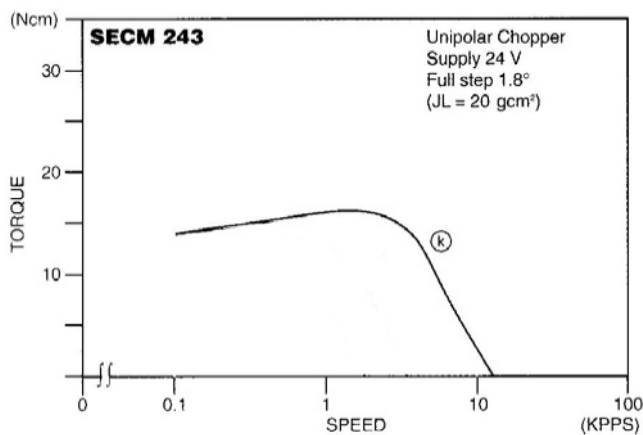
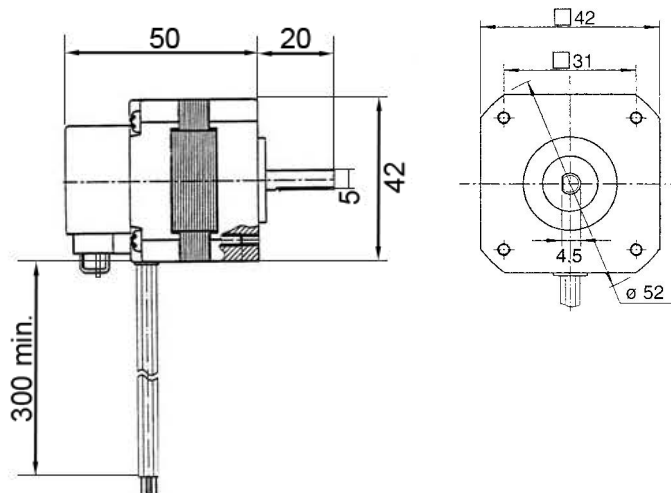
SECM243er Baureihe

2-Phasen-Schrittmotor mit Encoder

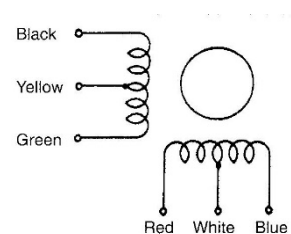
[1,8° High-Torque-Version]

Model	● Bipolar (Series)				● Unipolar				Speed Torque
	Holding Torque [Nm]	Current / Phase [A]	Resistance / Phase [Ohm]	Inductance / Phase [mH]	Holding Torque [Nm]	Current / Phase [A]	Resistance / Phase [Ohm]	Inductance / Phase [mH]	
SECM243-S1.0H2200	0.21	0.67	8.4	11.2	0.16	0.95	4.2	2.8	k

Number of Leads	Weight of Motor & Encoder	Size Length	Rotor Inertia
6	0.21 kg	50 mm	35 x 10 ⁻⁷ kgm ²



Schrittmotoranschluss



Optional sind für unsere Schrittmotoren auch Planetengetriebe erhältlich.



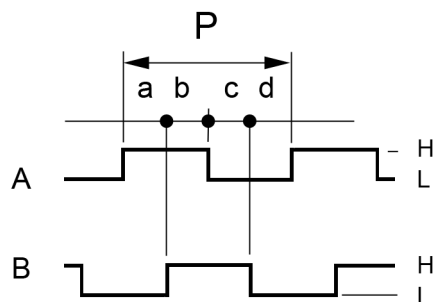
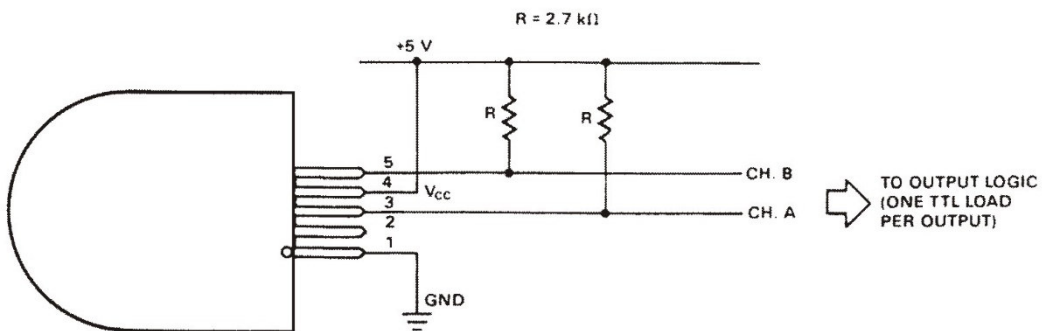
Encoder Performance

Operating Temp.range : 0°C – 85°C
 Supply Voltage : DC 5V ± 5% , 40mA max
 Resolution : 200 Counts/Turn
 Frequency Response : 100K Hz max.
 A phase difference : 1/4 P ± 1/8 P
 Code : Incremental A.B (2Ch.)

Output Signal : when output is high : DC 2.4V min
 Output Signal : when output is low : DC 0.4V max
 Sinking & Output Current : -1mA min - 5mA max
 Rise Time : 200 nsec, Fall Time : 50 nsec
 Moment of inertia : 5×10^{-7} kgm² max Encoder only
 Output Circuit : TTL Compatible

Required plug-in contact (alternative):

- Hewlett Packard: HEDS-8902
- AMP: 103686-4 ; 640442-5
- Dupont/Berg: 65039-032 with 4825X-000
- Molex: 2695 Series with 2759 Series



CW Rotation viewed from mounting end.